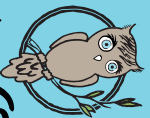


What is SMA?

- Spinal Muscular Atrophy (SMA) is an inherited disease that causes progressive muscle degeneration and weakness. Infants, like Getty, with SMA Type 1, the most severe type of SMA, are born with very little muscle tone and weak muscles. They develop feeding and breathing problems as the weakness gets worse over time. The weakness eventually becomes severe.
- SMA is the #1 genetic killer of young children. SMA is estimated to occur in nearly 1 out of every 6,000 births. 1 in every 40 people, or nearly 10 million Americans, UNKNOWNLY carries the gene responsible for SMA.
- SMA is a pan-ethnic disease and does not discriminate based on race, ethnicity, or gender. There is currently no treatment and no cure, but the National Institutes of Health (NIH) selected SMA as the disease closest to treatment of more than 600 neurological disorders IF provided adequate resources.
- The American College of Medical Genetics recommends that SMA carrier testing be made available to ALL couples planning a family, regardless of ethnicity or family history.



Getty Owl
foundation

The Getty Owl Foundation was created in honor of our daughter Getty. Our non-profit is a local outreach for SMA awareness, assisting SMA families, and raise money for research to find a cure for SMA.

FOR ALL GOF EVENTS GO TO

www.gettyowl.org

Helping families. Fighting SMA.